

**MannaCare**  
WIDER CHOICES FOR OLDER PEOPLE

# Doncaster Melaleuca Lodge – residential care

## WHAT IS RESIDENTIAL CARE?

Residential care involves the provision of full-time aged care or temporary respite facilities and services, including accommodation, nursing care and lifestyle programs.

## WHAT IS DONCASTER MELALEUCA LODGE?

Doncaster Melaleuca Lodge, or “The Lodge” as it is commonly referred to, is a single storey home in Doncaster with beautiful, panoramic views from its northern aspect of the surrounding area and distant Kinglake National Park.

A flat walking path enables residents to get outside and enjoy the landscaped gardens.

The Lodge accommodates 60 residents, in single rooms with private ensuites and offers both permanent and short-term respite rooms.

It has several dining rooms, a coffee club organised and run by lifestyle staff, and multiple large and small lounges.

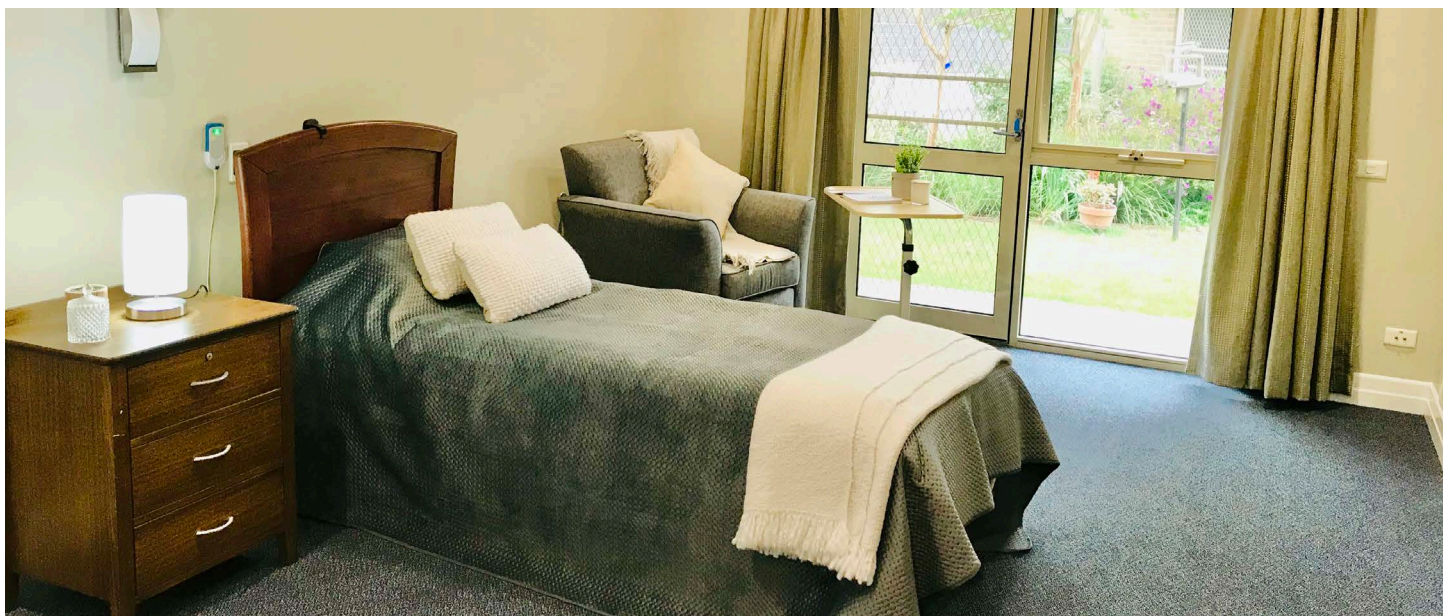
Residents are supported socially, physically and culturally. A diverse range of activities and outings helps residents remain engaged and stimulated.

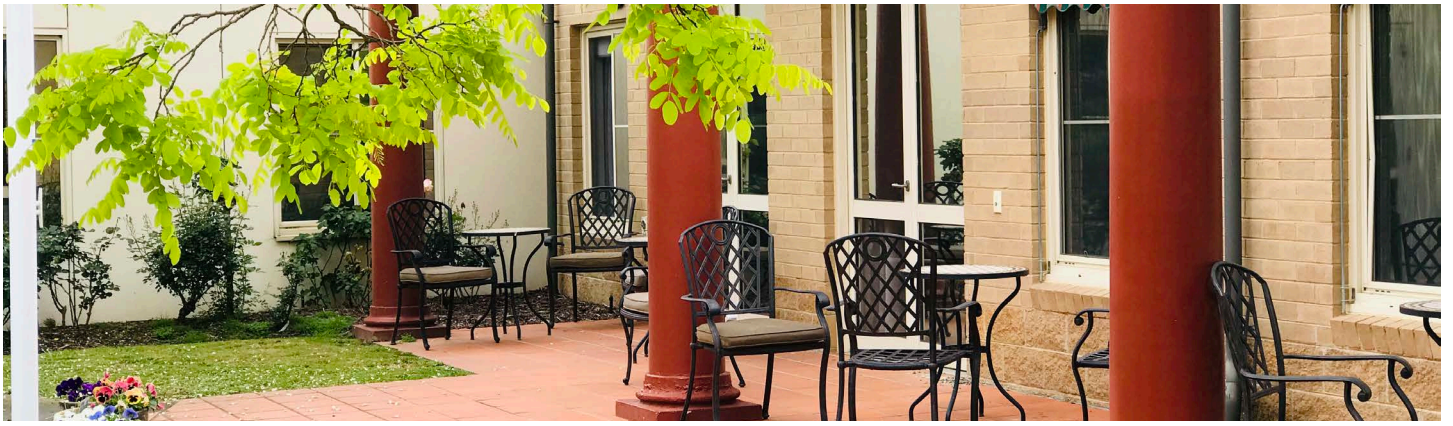
## WHAT FACILITIES ARE OFFERED?

- † Single bedrooms (various sizes) with ensuite
- 🏠 24 hour nursing support & clinical coverage
- ☎️ 24 hour emergency call system
- 🍽️ Full dining room, with meals freshly prepared and cooked onsite

## FEATURES

- Most bedrooms have direct garden or courtyard access
- Newly renovated areas and furnishings
- Ageing in place
- Personalised and consultative care
- Appropriate and modern care equipment
- Skilled and qualified staff
- Holistic approach to care & wellbeing
- Individualised personal and clinical care





## LEISURE AND LIFESTYLE ACTIVITIES

- Extensive and engaging lifestyle program
- Special events and functions
- Opportunity to form social circles, be creative and try new hobbies
- Music and crafts
- Social outings (wheelchair accessible bus)
- Community involvement through volunteers

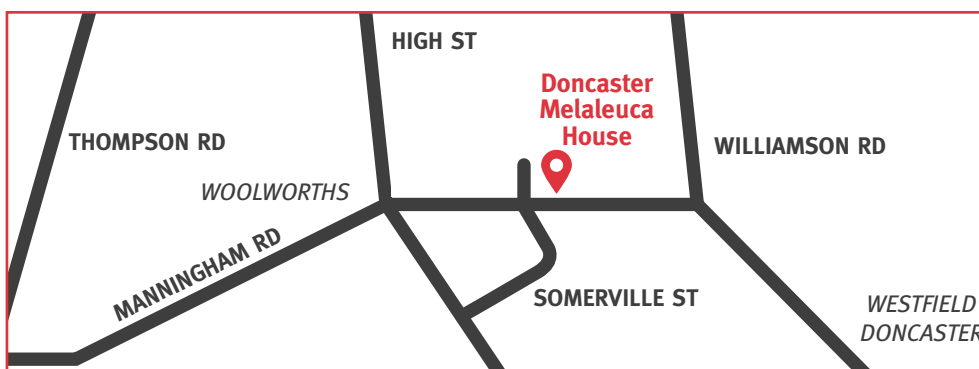
## SERVICES

- Laundering of personal clothing
- Visiting health care professionals including GP, geriatrician, podiatrist, optometrist, physiotherapist, dietician, speech pathologist, audiologist and dentist
- Beauty salon with visiting hairdresser
- Additional Services - MannaClub

## WHO IS ELIGIBLE FOR RESIDENTIAL CARE?

Residential care in Doncaster Melaleuca Lodge is available to a person if:

- they have physical, medical, social or psychological needs that means they need care; and
- their needs cannot be met more appropriately through non-residential care services; and
- they have been assessed as having a condition of frailty or disability requiring continuing personal care, and assessed as being incapable of living in the community without support

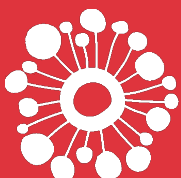


### DONCASTER MELALEUCA LODGE

383 Manningham Road,  
Doncaster VIC 3108

For more information about Doncaster Melaleuca Lodge residential care, call MannaCare.

1300 90 20 23



**MannaCare**  
WIDER CHOICES FOR OLDER PEOPLE



383 Manningham Road, Doncaster VIC 3108



Phone: 1300 90 20 23



enquiries@mannacare.org.au



www.mannacare.org.au